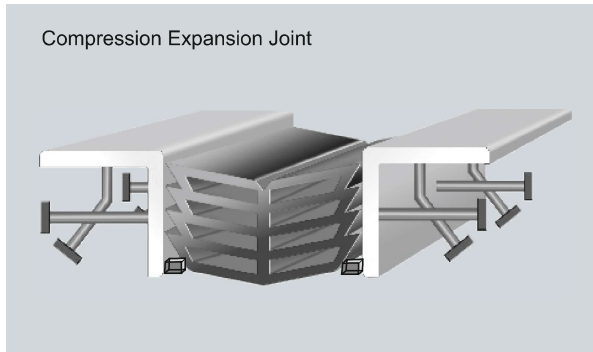


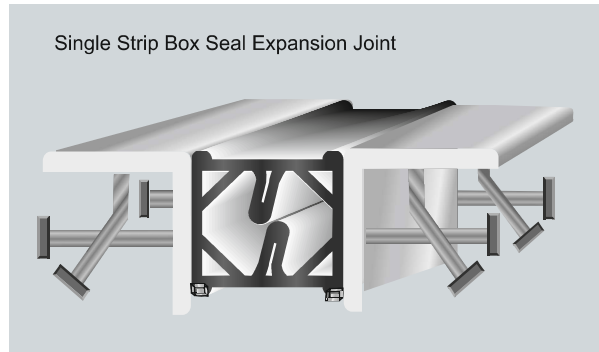
BRIDGE EXPANSION JOINT (MORTH & RDSO APPROVED)

Maruti expansion joint consist of steel armoured nosing at two edges of the joint gap suitably anchored to the concrete deck and a preformed EPDM/Polychloroprene elastomer compressed and fixed into the joint gap with special adhesive binder. The seal is supposed to remain in continual compression due to pressing of the seal wall against joint faces through out the service life to ensure that the joint remains watertight and capable of repelling debris

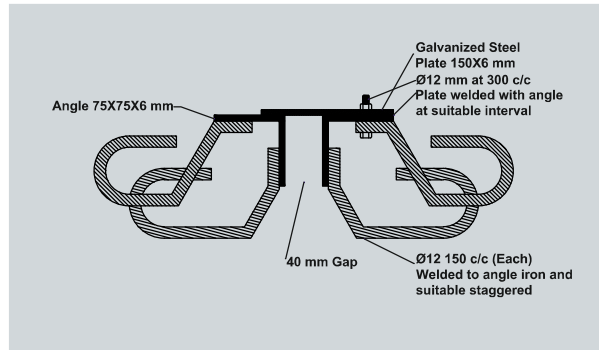
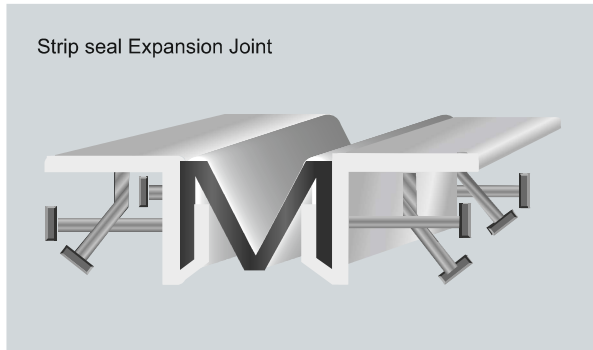
Compression Expansion Joint



Single Strip Box Seal Expansion Joint



Strip seal Expansion Joint



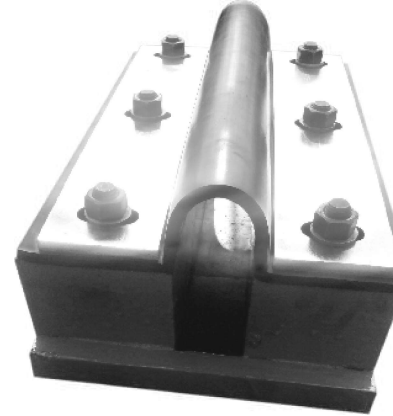
INSTALLATION

BRIDGE EXPANSION JOINT

The prime functional requirement of a joint is to cater for movements with very low resistance or with no resistance at all. The design of the expansion joint is capable of accommodating all movements of the deck viz. translation and rotation, and also capable for all loads acting on it and local actions under all weather conditions.

The expansion joints performs the following basic functions.

- (1) Permit the expansion and contraction of the span to which it is fixed without causing any distress or vibration of the structure.
- (2) Cause no inconvenience to the road user and offer good riding comfort.
- (3) Should be capable of withstanding the traffic loads including dynamic effects.
- (4) Should be watertight and capable of expelling debris without clogging.



MOVEMENTS AND ROTATION

Maruti expansion joint allow movement all the three direction and rotation about all three axis.

